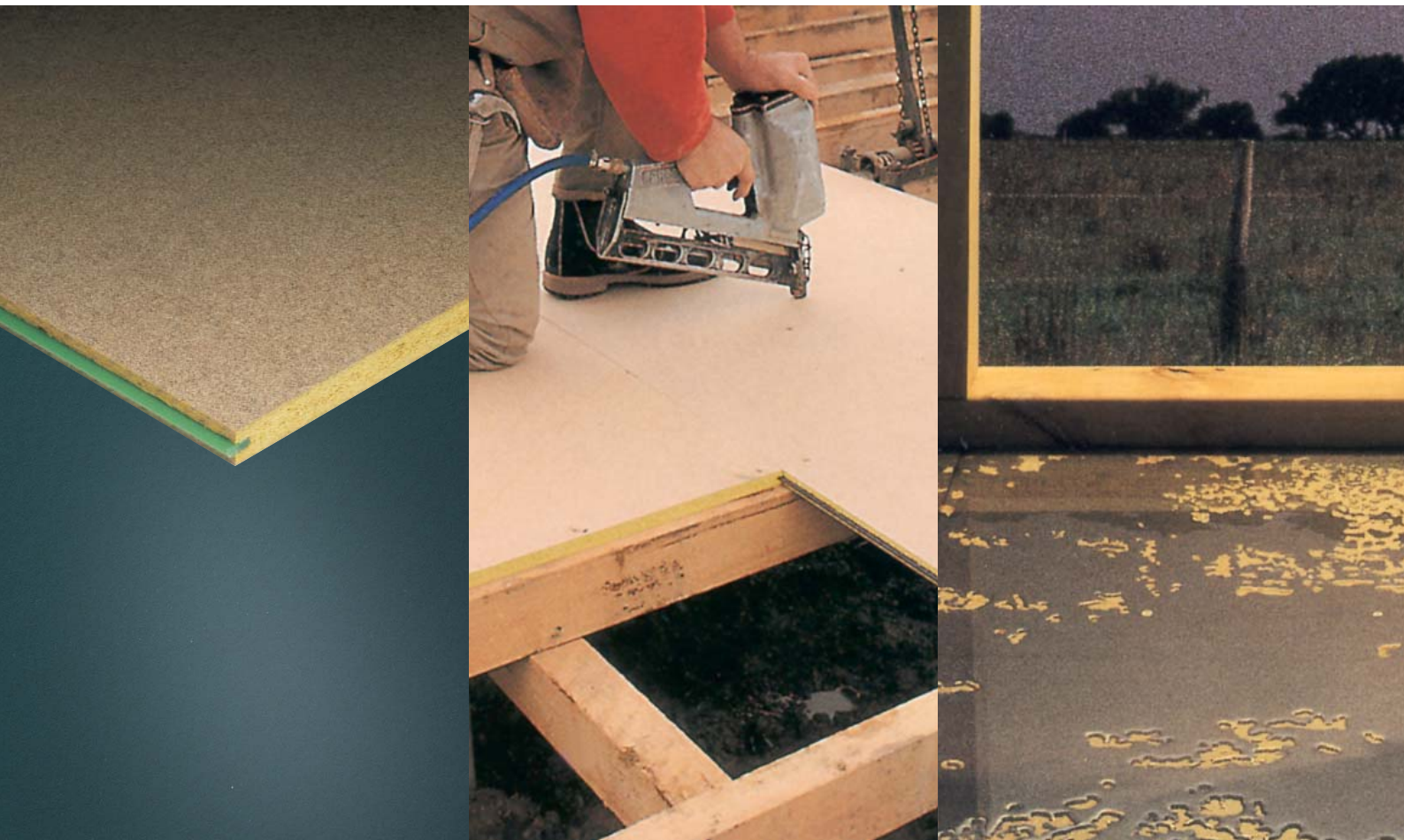


# Particleboard Flooring

The tradesman's essential guide



another **trade essential** from  
**THE laminex** GROUP™

# Particleboard Flooring

The tradesman's essential guide



## Flooring even rotten weather can't flaw

Trade Essentials® Particleboard Flooring provides the best protection there is against damage caused by damp or humid conditions. Indeed, it is made to quality standards so high, not even the worst weather can flaw it if the guidelines in this brochure are followed. And, there are two product choices to cover your building requirements:

Green Tongue - 19mm for 450mm joists, and

Beige Tongue - 22mm for 600mm joists.

## Superior moisture resistance

Unlike many particleboards, Trade Essentials® Particleboard Flooring is manufactured using extra fine wood particles.

This ensures a far better distribution of the water resistant resins across the entire surface. In addition, all edges are coated with a wax edge seal.

The result is a level of moisture resistance, which is over **two times greater** than the required standards for flooring. Even when left exposed to the elements for up to three months Trade Essentials® Particleboard Flooring is guaranteed to meet the required standards.

## A safe, solid platform

Trade Essentials® Particleboard Flooring features an easy to use tongue and groove system that gives the flooring remarkable strength in the unsupported joints. This guarantees you a safe and solid platform on which to build your frame, or lay your floor coverings.

## Applications

Trade Essentials® Particleboard Flooring is a three layered particleboard, bonded with moisture resistant resin and wax, specifically formulated for use as interior flooring.

It is suitable for all domestic housing as well as commercial installations, provided it is installed to the requirements of AS 1860 (Installation of Particleboard Flooring).

Trade Essentials® Particleboard Flooring can be used for a variety of framed building constructions including fitted floor, upper storey and platform constructions.

## Moisture resistance

Trade Essentials® Particleboard Flooring is capable of withstanding full weather exposure for up to 3 months. Boards should however, be covered on building sites as moisture take will result in expansion, and if wet boards are fixed, shrinkage will occur as they dry out and contract. A moisture level of about 7% is present in the board at the time of despatch from the warehouse at Welshpool, WA.

### Thermal properties

Thermal conductivity – 0.1 – 0.14 W/mk.  
Dimensionally stable and strength is unaffected over normal temperature range.

### Acoustic properties

Sound transmission loss depends on the building element and its method of installation. Particleboard with thickness over 16mm should achieve 25dB loss.

### Fire resistance

Green & Beige Tongue Flooring is combustible. Burning is limited by charcoal formed on the board surface. The rate of burning is comparable to that of natural timber of similar density.

## Particleboard flooring adhesives

The following information is provided as an adhesive usage guide and is based on the application of a 5mm bead to joists and tongues as outlined in the installation instructions in this brochure.

Flooring	Adhesive Required per Pack of Flooring
<b>Green Tongue (19mm to span 450mm joists)</b>	
800mm wide sheet (35 sheets per pack)	25 x 300 ml cartridge or 10 x 850 ml cartridge
<b>Beige Tongue (22mm to span 600mm joists)</b>	
800mm wide sheet (25 sheets per pack)	20 x 300 ml cartridge or 8 x 850 ml cartridge



Physical Properties (Typical physical properties when tested to AS/NZS 1859.2: 2001. Int)			
Board Thickness Property	Unit	19mm	22mm
Weight	Kg/m <sup>2</sup>	13.1	15.2
Modulus of Rupture	MPa	24 av.	24 av.
Modulus of Elasticity	MPa	3500 av.	3500 av.
Internal Bond	kPa	700 av.	700 av.
Thickness Swell 24hr	%	5 av.	5 av.
Glue Bond Durability	MPa	5	5
Surface Water Absorption	g/m <sup>2</sup>	70	70
Thickness Stability	%	12 av.	12 av.
Glue Bond Quality	%	50	50

Fire Hazard Indices (Typical achieved when tested to AS/NZS 1530.3: 1989)		
Indices	Result	Range
Ignitability	14	0 - 20
Spread of Flame	8	0 - 10
Heat Evolved	7	0 - 10
Smoke Developed	3	0 - 10



## Product range

Trade Essentials® Particleboard Flooring has a plain core colour with a yellow wax edge seal to all edges. There are two product thicknesses each identified by the colour of their PVC tongue:

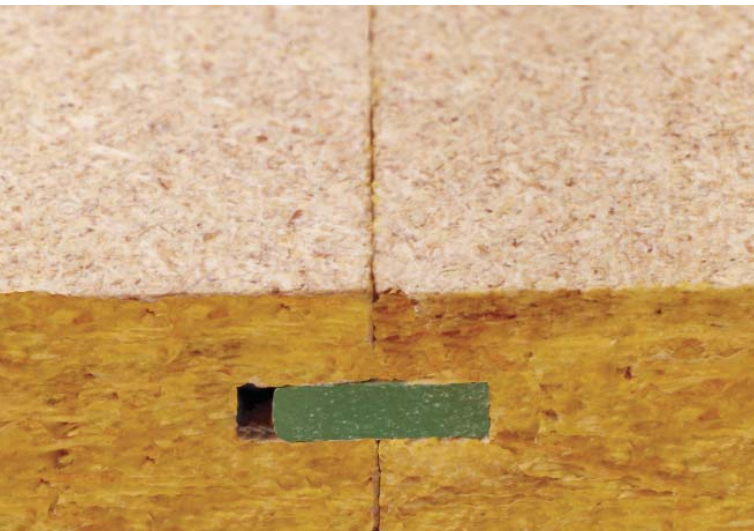
### **Green tongue (19mm) –**

For use with floor joists spaced at 450mm

### **Beige tongue (22mm) –**

For use with floor joists spaced at 600mm

Trade Essentials® Particleboard Flooring is available in different sheet sizes. For full details contact your nearest branch of The Laminex Group.



## Installation instructions

### 1. Assess the site

Ensure correct sub-floor clearance and ventilation as per Australian Standard 1860 "Installation of Particleboard Flooring", or local building regulations. Particleboard flooring is not suitable under conditions of permanent dampness, i.e. where particleboard moisture content is permanently in excess of 16 percent moisture content.

### 2. Positioning and fixing

Locate a string line parallel to the perimeter of the floor and at right angles to the joists. Fit the first new row of sheets with the tongued edge to the string line. This will ensure edge straightness. Tongue and grooved edges must run parallel to the span and sheeting must span no less than two floor joist spacings. Fix second sheet in a similar manner inserting plastic tongue into the groove of sheet one. Be sure to apply bead of adhesive to tongue prior to installation.

DO NOT cramp or over-tighten. After each row is laid, fully nail or screw the previous row (refer to the fixing pattern).

Install all sheets with the same face upwards, to ensure flush mating of adjoining faces. Butt joints should be staggered in alternative rows to give a rigid floor.

### Handy hints:

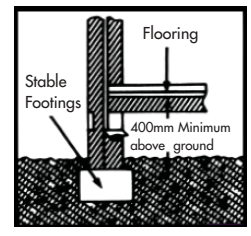
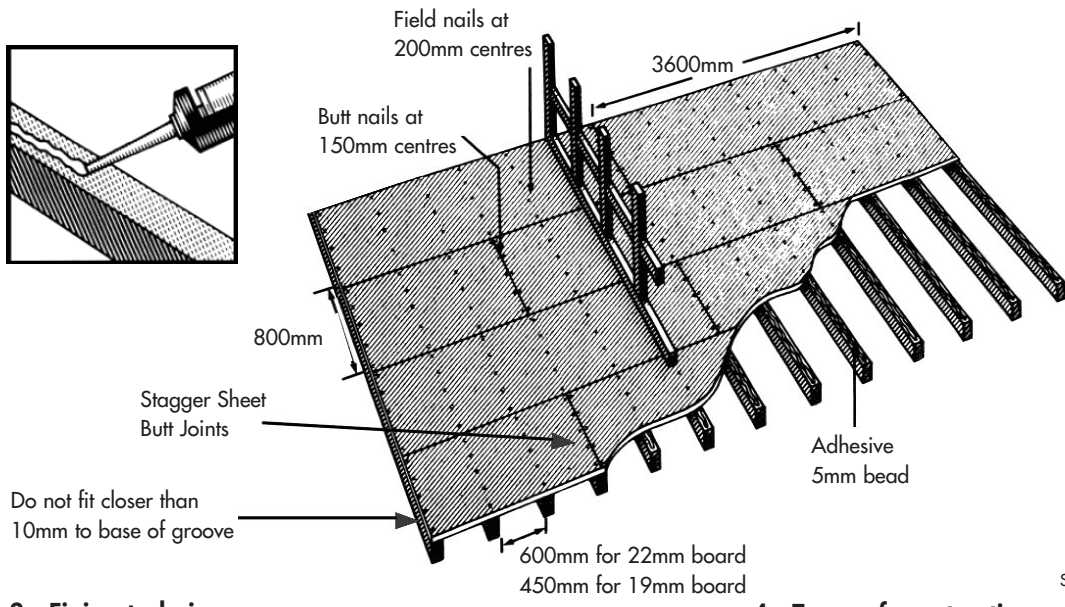
The Laminex Group recommends **Trade Essentials®**

**Particleboard Flooring Adhesive** for this application.

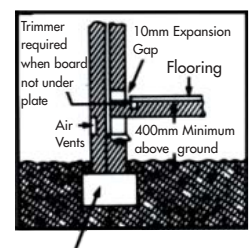
This is a high performance, fast setting synthetic rubber based adhesive, specially formulated for the permanent and speedy installation of structural sheet flooring panels, in conjunction with supplementary mechanical fastenings.

If the tongue and grooved profile is changed to a square edge during trimming or cutting of sheet, re-profile the edge with a circular saw and insert a tongue, or alternatively use as **square edged Particleboard Flooring**.

Where Particleboard Flooring is used in square edge form, the sheets should be laid with their long edges supported by noggings or trimmers. Sheet butt joints must be staggered.



**Platform construction**



**Fitted floor**

### 3. Fixing technique

Particleboard Flooring may be fixed on the subfloor with hand or power-driven fasteners. For a rigid squeak-free floor system, ensure a continuous 5mm bead of **Trade Essentials® Particleboard Flooring Adhesive** is applied to all joists and along the top of the tongue. Two beads of adhesive need to be placed on the joist where the butt joint occurs.

DO NOT apply too far ahead as adhesive cures quickly. At all times follow instructions on the adhesive pack.

Where gun nailing, nail heads should not penetrate the surface by more than 1.0mm. Adjust air pressure to suit softwood or hardwood joists. Gun nail only in accordance with gun nail specifications. Galvanised nails are recommended.

Nails should be punched below the surface of the sheets just before the sanding or laying of floor coverings. This ensures firm seating of the flooring joists. Particleboard Flooring that is likely to be subjected to increased levels of traffic vibration should be fixed with spiral or helical shank nails.

Nailing Method	Joist Type	Nail or Screw Size (mm)
Hand Hammer (nails)	Hardwood & Cypress Pine	50 X 2.80
	Softwood	55 X 3.15
Nail Gun (nails)*	All Timber	55 X 2.5 Tee - head or Finished head
Screw	Timber Type	No. 10 X 50mm, Type 17 Countersunk head, Self drilling
Screw	Steel Type	No. 10 X 45mm Countersunk head, Self embedding wing tip

### 4. Types of construction

#### 1. Platform floor construction

Platform flooring construction involves flooring laid on the floor joists over the whole floor area prior to the erection of the wall and roof framing. This method is designed to resist exposure to weather in platform construction for up to 3 months. Less exposure however, is recommended.

Exposure to very hot sun, particularly after the board has been soaked by rain, may cause panel shrinkage and cupping. If this occurs, then light wetting of the board and shading of the site may help minimise the effect by slowing the rate at which the flooring dries.

**DO NOT** stack heavy concentrated loads on the floor, e.g. bricks, heavy structural materials. **DO NOT** use the floor as a mixing table and avoid build up of plaster, concrete and paint on the floor.

#### 2. Fitted floor construction

Fitted floor construction involves construction of the floor after the internal walls. An expansion gap of 1–2 mm per metre of room dimension should be left around the room perimeter. This is usually covered by the skirting board.

#### 3. Upper storey construction

Upper storey construction utilises Particleboard Flooring laid on timber joists and supported on wall framing / internal brick work. Green and Beige Tongue Particleboard Flooring is ideal for internal upper storey construction and extensions.

## 5. Surface finishing

Australian Standard 1860 "Installation of Particleboard Flooring" provides guidelines for surface finishing.

(a) Inspect for dampness especially if board has been weathered before proceeding with finishing operations; if found to be excessively damp it shall be left until its moisture content is 15 percent or less.

(b) If the flooring is to be covered with carpet, the surface should be firm and tight with no loose flakes or particles:

(i) nails should be inspected and hammered flush, screws should be flush with the surface.

(ii) if the surface has been exposed to the weather, some sanding may be required. Full sanding may not be necessary, but rough or uneven areas should be spot sanded. Nail punching and screw counter sinking will only be necessary in these areas.

NOTE FULL SANDING) : Full sanding may be necessary if the Particleboard Flooring has been subjected to prolonged rain while being exposed.

(iii) sanding before carpet laying should be with 40-60 grit sand paper.

(c) For other surface finishes, full sanding will usually be required if the particleboard has been exposed to the weather. The surface shall be given a first cut with 40-60 grit sand paper followed by 80-100 grit sand paper.

(d) Depth of material removed shall not exceed the following except where otherwise specified by the manufacturer.

(i) over the general sheet area – 1mm; and

(ii) within 50mm of any supported edge – 2mm.

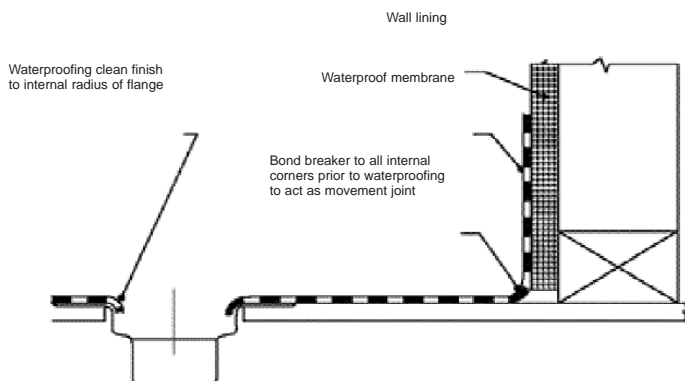
(e) All surfaces shall be cleaned to remove dust.

## 6. Surface preparation - wet area rooms

(Bathrooms, kitchens, laundries)

- Procedures required by AS 3740 "Waterproofing of Wet Areas Within Residential Buildings", should be followed closely.
- Holes may be required in the floor to accommodate pipes, drains and plumbing wastes. These should be accurately drilled and cut ensuring that excessive material is not removed (rough punching is unacceptable).
- All edges should be sealed using pink primer, construction adhesive, or another suitable sealer.
- All building debris, plastic or other building matter should be completely removed and the floor surface sanded clean prior to waterproofing treatments.
- Joints between sheets should be carefully inspected and prepared. Flashing should be placed over joints.
- An impermeable membrane is required to seal the floor prior to the overlaying of surface finishes such as ceramic or PVC tiles. The Laminex Group recommends the following for application:
  1. Davco Dampfast
  2. Bostick Ultraseal

The Laminex Group recommends that the respective manufacturer's instructions are followed when applying these products.



## 7. Resilient sheet and tile

The requirements of Australian Standard 1884 “Floor Coverings – Resilient Sheet and Tiles-Laying and Maintenance Practices” should be followed when finishing with materials such as flexible and semi-rigid cork, rubber, linoleum and vinyl.

Unsatisfactory results may be obtained if resilient floor coverings are laid directly on to the Green Tongue or Beige Tongue Particleboard Flooring, due to movement of the flooring or subfloor structure with changes in moisture content or settling.

Use of an underlay will minimise the risk of either failure of the bond between the covering and the floor, or of particleboard flooring sheet joints showing through the coverings. Underlay joints should not coincide with the particleboard flooring joints.

## Standards & relevant codes

AS/NZS 1859  
Reconstituted Woodbased Panels Part 1, Particleboard.

AS 1170.1 SAA  
Loading Code, Dead and Live Loads and Load Combinations.

AS 1860  
Installation of Particleboard Flooring.

AS 1884  
Floor Coverings – Resilient Sheet and Tiles - Laying and Maintenance Practices.

AS 3740  
Waterproofing of Wet Areas Within Residential Buildings.

## Design criteria

### Industrial

Guidelines in Australian Wood Panels Association Flooring Design Manual. Obtainable online at [www.woodpanels.org.au](http://www.woodpanels.org.au)

### Domestic

19mm to span 450mm maximum joist centres.

22mm to span 600mm maximum joist centres.

### Hints & tips:

- Do ensure correct, sub-floor clearance and ventilation
- Do lay out all sheets first when fixing a platform floor
- Do leave an expansion gap around room perimeters of fitted floors (see positioning & fixing diagram)
- Do make sure to follow instructions when using adhesive

- Avoid build-up of concrete, plaster and paint on floor
- Do not allow water to pool on sheets – sweep away as soon as possible
- Do not leave butt joints unsupported by joists or noggings
- Do not stack heavy concreted loads on floor panels
- Do not Bondcrete or otherwise seal floor during construction – this will prevent floor drying out properly
- Do not use floor as a mixing table
- Set out joists to suit sheet size and thickness
- Underlay joints should not coincide with particleboard flooring joints
- And a final hint – screws (rather than nails) produce a better squeak – free finish for DIY installers

## Storage and exposure of Particleboard Flooring

**Trade Essentials® Particleboard Flooring should always be stored flat and in a dry area, with timber bearers spaced about 450mm apart to keep it off the floor or ground.**

Packs of board are best protected from the weather.

Particleboard Flooring should be stored for about 2 days prior to fixing to allow adjustment to site conditions. Like nearly all timber products Particleboard Flooring may react to changes in humidity and to direct wetting, but if laid in accordance with the required standards and the recommendations outlined in this brochure, Trade Essentials® Particleboard Flooring will withstand the conditions of platform construction.

Once it is laid, Trade Essentials® Particleboard Flooring may be exposed to the weather for up to three months and still meet the requirements of AS/NZS 1860: 2001 for Class 1 flooring.

Water should not be allowed to lie on the flooring surface. Sweep it off or drill drain holes in positions that will be covered when the job is completed. It is recommended that protection by roof and walls be provided as soon as possible.

## Safety and handling

Particleboard is a reconstituted wood product containing wood, resin and wax. Machine tools should be fitted with dust extractors and the wearing of a dust mask is recommended. Material Safety Data Sheets for Particleboard Flooring is available on request from any branch of The Laminex Group.

# Trade Essentials®

## Product Range

- Adhesives • Craftform® • Craftwood®
- Craftwood® Mouldings • Particleboard
- Particleboard Flooring • Whiteboard

**Particleboard Flooring** is marketed, distributed and manufactured in Australasia by The Laminex Group

The information contained in this technical publication is intended to give a general indication of the characteristics of the material. While all possible care has been taken to ensure that the information is correct, the manufacturer cannot accept any liability, nor is any liability on the part of the manufacturer to be implied as a result of the data given. All measurements shown are in millimetres and nominal unless otherwise stated. The information contained in this publication supersedes all previous information and is subject to alteration without notice.

For sales enquiries call any one of The Laminex Group Customer Service Centres:  
**Laminex®** 132 136, **Formex®** VIC/NSW - 1300 731 100, QLD (07) 3277 7649,  
WA (08) 9356 0800, NT (08) 8947 2312, SA (08) 8245 6300, **Formica®** 136 346.

For more information including sheet sizes and product availability, visit  
[www.thelaminexgroup.com.au](http://www.thelaminexgroup.com.au)